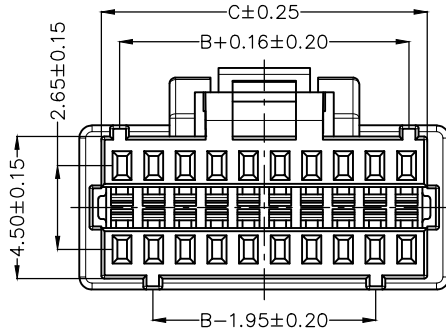
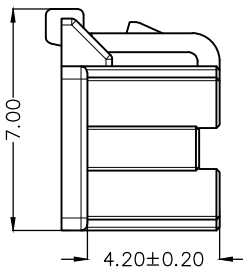
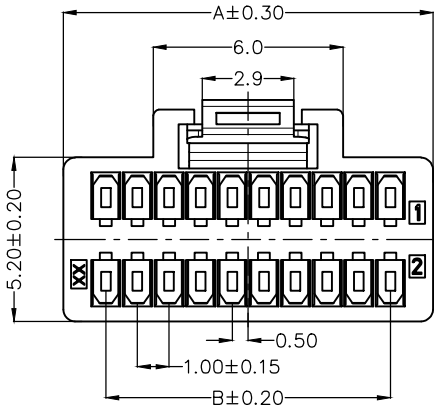
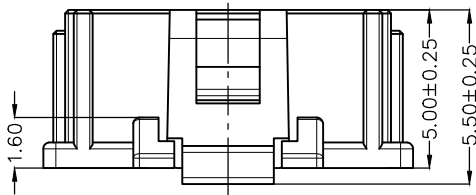


REV	LOCATIONS	DESCRIPTION	DATE	REVISER	APPD

Electrical
 Temperature Range—Operating: -25°C~+85°C
 Material
 Housing: PA66 (UL 94V-0)
 Applicable Terminal: FT10006
 Mates With: FWF10012 Series



Ordering Information

FHG 100 07 — D XX M 2 WH B
 1 2 3 4 5 6 7 8 9

Circuits (n)	Part No.	Dimensions(mm)		
		A	B	C
20	FHG10007-D20M2WHB	11.70	9.00	10.30
24	FHG10007-D24M2WHB	13.70	11.00	12.30
30	FHG10007-D30M2WHB	16.70	14.00	15.30
36	FHG10007-D36M2WHB	19.70	17.00	18.30
40	FHG10007-D40M2WHB	21.70	19.00	20.30
50	FHG10007-D50M2WHB	26.70	24.00	25.30

1 Category FHG—Housing	2 Series Number 100—Pitch1.00mm	3 Distinction No. 07	4 Row Option D—Double row	5 Circuits XX
6 Entry Type M—Male	7 Material—Resin 2—PA66	8 Color—Resin WH—White	9 Packaging B—PE Bag	

<p>THIRD ANGLE PROJECTION</p>	<p>GENERAL TOLERANCES (UNLESS SPECIFIED)</p>		<p>APPROVE BY LEO</p>	<p>DATE 02/AUG/23</p>	<p>PART NO. FHG10007-DXXM2WHB</p>	<p>ITEM NO. FHG10007</p>	<p>Building Technology Cornerstone</p>	
	<p>DESIGN UNITS METRIC</p>	<p>X. ±0.30</p>	<p>X.* ±5*</p>	<p>CHECKED BY GISELLE</p>	<p>DATE 02/AUG/23</p>	<p>TITLE Wire to Board Pitch 1.0mm(Housing)</p>		<p>REV 0</p>
<p>SCALE 5:1</p>	<p>SIZE A4</p>	<p>X.XX ±0.15</p>	<p>X.XX* ±1*</p>	<p>DRAWN BY NICK</p>	<p>DATE 02/AUG/23</p>	<p>THIS DRAWING CONTAINS INFORMATION THAT IS PROPRIETARY TO TXGA INDUSTRIAL ELECTRONICS(S.Z)CO.,LTD AND SHOULD NOT BE USED WITHOUT WRITTEN PERMISSION</p>		